



36/226-236 Beauchamp Road Matraville NSW

2 1 2

Perfectly positioned right by Heffron Park in one of the areas most sought after park side complexes, this dual level residence boasts fully renovated interiors throughout, a spacious floor plan and is ideal for young families or investors.

- Open plan lounge and dining area flows to a large oversized courtyard
- End townhouse, only one common wall
- Stunning kitchen with stainless steel appliances, dishwasher and Caesar stone bench tops
- Sun-drenched interiors, hardwood bamboo flooring, plantation shutters, ceiling fans
- Lock up garage has internal access and can be easily converted into a 3rd bedroom
- Spacious bedrooms, master with additional sun room

**Type** : Townhouse

**View** : <https://www.reconstructrealestate.com.au/sale/nsw/eastern-suburbs/matraville/residential/townhouse/5684022>

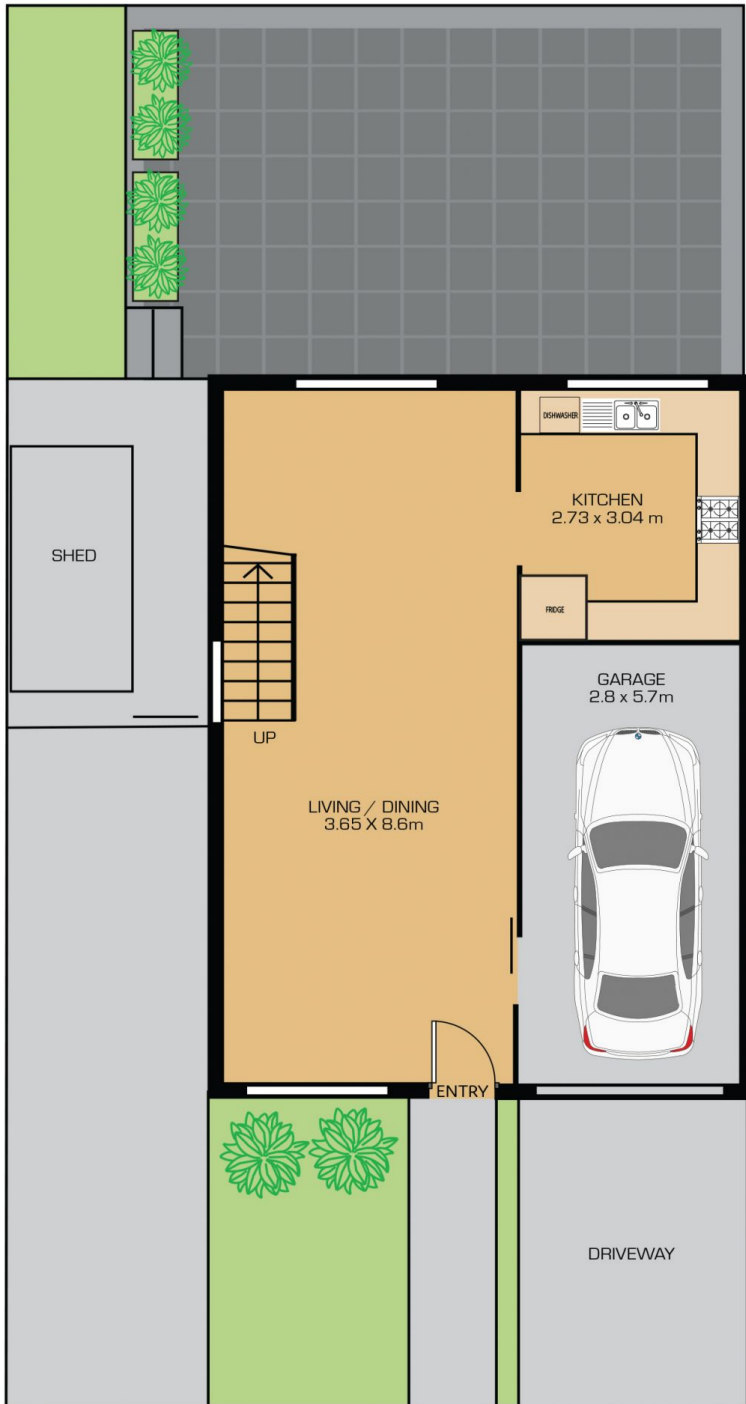


**James Kennedy**  
02 9346 2010

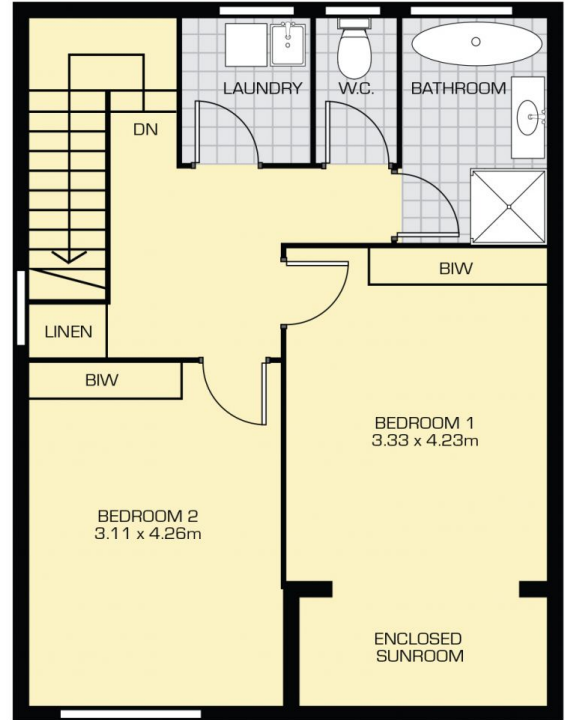


**Karen Dolowitz**  
02 9346 2010

[For full version visit the website](https://www.reconstructrealestate.com.au)



GROUND FLOOR LEVEL



FIRST FLOOR LEVEL



36/226 BEAUCHAMP ROAD, MATRAVILLE



*Disclaimer:* Floor Plan measurements are approximate and are for illustrative purposes only. While we do not doubt the floor plans accuracy, we make no guarantee, warranty or representation as to the accuracy and completeness of the floor plan. You or your advisors should conduct a careful, independent investigation of the property to determine to your satisfaction as to the suitability of the property for your space requirements.